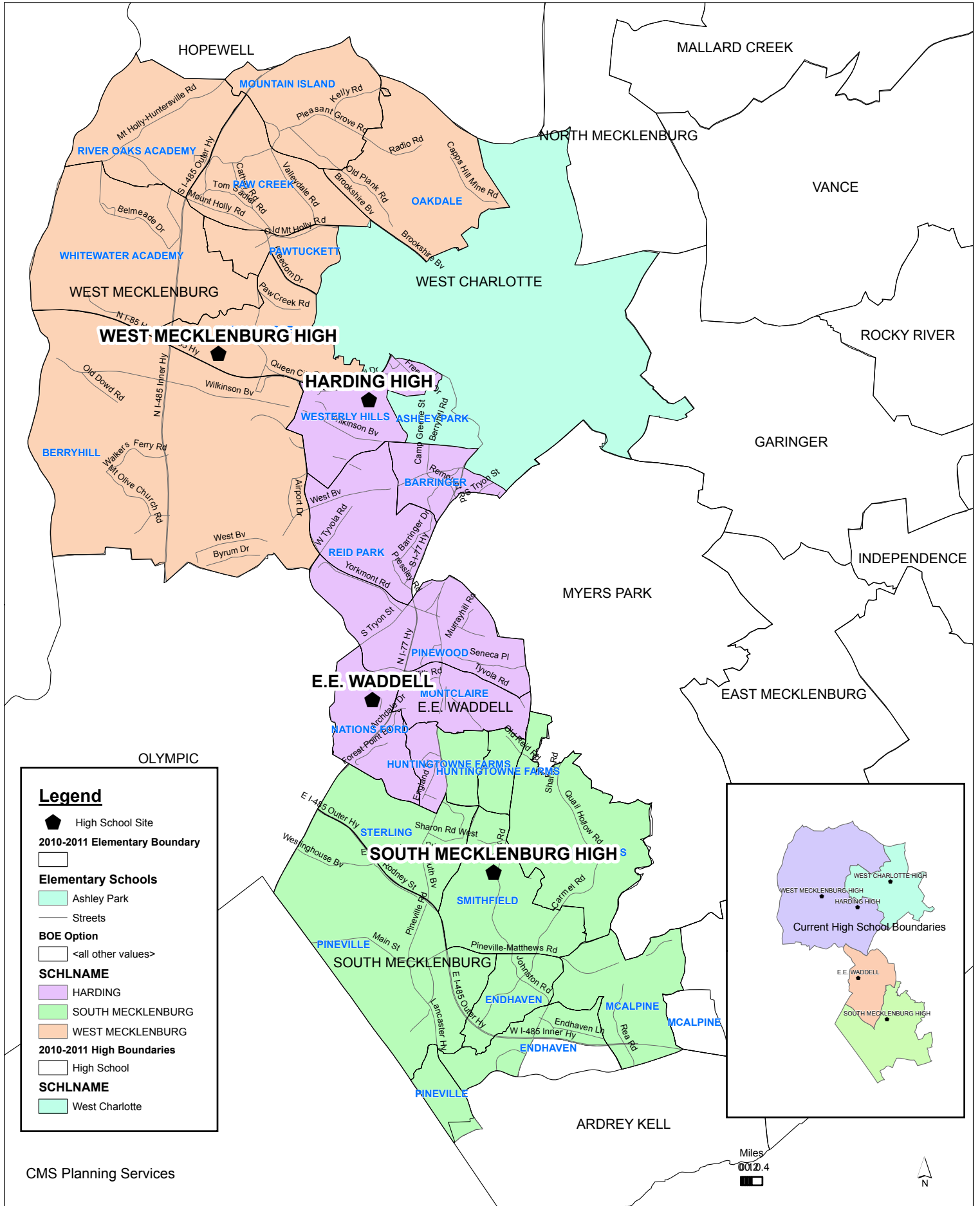


Board Adopted EE Waddell, Smith, Harding, West Mecklenburg High, and West Charlotte, 2011-2012 School Year



Board Adopted
E.E. Waddell, Harding, Phillip O. Berry, South Mecklenburg, West Charlotte,
West Mecklenburg High School

2010-2011 School Year - 20th Day Student Data

High School	Total Membership, 20th Day 2010-11	Student Adjusted Building Classroom Capacity	Student Building Utilization (without mobiles)	Number of Mobiles	Native American	Asian	African American	Hispanic	Multi-Race	White	EDS***
E.E. Waddell	1076	1491	72%	0	0%	2%	51%	37%	2%	8%	78.8%
Harding**	894	1716	52%	0	1%	4%	86%	3%	3%	3%	59.2%
Phillip O. Berry**	1261	1746	72%	0	0%	4%	74%	12%	3%	7%	65.6%
Smith**	1222	761	161%	19	0%	4%	26%	18%	11%	41%	33.4%
South Mecklenburg*	1999	2793	72%	0	0%	5%	23%	18%	2%	52%	33.0%
West Charlotte*	1658	1982	84%	20	1%	5%	86%	5%	2%	1%	79.0%
West Mecklenburg*	2193	2481	88%	0	1%	6%	68%	12%	3%	10%	73.4%

* Partial Magnet

** Full Magnet

***Economically Disadvantaged Student percentage (EDS) based on 2009-10 data

Total Membership: derived from Principal's Monthly Report (PMR)

CMS Students After Proposed 2011-2012 School Boundary

High School	2010-2011			2011-2012				2012-2013			
	Total Number of Students as of 20th day 2010-11	Student Adjusted Building Classroom Capacity	Student Building Utilization (without mobiles)	Projected Number of Students from Growth (per year)	Total Students with Growth	Student Adjusted Building Classroom Capacity	Student Building Utilization (without mobiles)	Projected Number of Students from Growth (per year)	Total Students with Growth	Student Adjusted Building Classroom Capacity	Student Building Utilization (without mobiles)
E.E. Waddell (Home School closed)											
Smith at E.E. Waddell (As Full Magnet)**	1222	1491	82%	48	1270	1491	85%	0	1270	1491	85%
Harding*	1979										
Harding Magnet Students (Math/Env)	-349										
Total Harding	1630	1716	95%	40	1670	1716	97%	40	1710	1716	100%
Phillip O. Berry**	1261										
Harding Magnet Students (Math/Env)	349										
Total Phillip O. Berry	1610	1746	92%	0	1610	1746	92%	0	1610	1746	92%
South Mecklenburg*	2300	2793	82%	35	2335	2793	84%	35	2370	2793	85%
West Charlotte*	1730	1982	87%	0	1730	1982	87%	0	1730	1982	87%
West Mecklenburg*	1672	2481	67%	35	1707	2481	69%	35	1742	2481	70%

** Full Magnet

* Partial Magnet

Proposed 2011-12 Demographic Student Data as of 20th day 2010-11 and Percent Proficient 2009-10 Data

School	Total Number of Students as of 20th day 2010-11	Native American	Asian	African American	Hispanic	Multi-Race	White	EDS *	Percent Proficient 2009-10	Percent Proficient Staff Recom.**
Harding	1630	1%	3%	70%	18%	2%	6%	74%	87%	74%
Phillip O. Berry	1610	0%	4%	77%	10%	3%	6%	62%	89%	89%
South Mecklenburg	2300	0%	6%	26%	21%	2%	45%	39%	87%	86%
West Charlotte	1730	0%	6%	86%	5%	1%	2%	79%	72%	72%
West Mecklenburg	1672	1%	7%	62%	15%	4%	12%	72%	72%	74%
Waddell High School									71%	

*Economically Disadvantaged Student percentage (EDS) based on 2009-10 data, estimate.

**Data based on 2009-10 student data.

Other Notes:

Smith Academy program will relocate to the E.E. Waddell school building.

Smith Academy Chinese Immersion program to grow by an additional 48 students.

E.E. Waddell will no longer have a home school boundary.

Harding High will have a new home school boundary in addition to continuing the IB magnet program.

Harding High magnet students for Math/Science/Env Studies students will relocate to Phillip O. Berry Academy.